

# hgle & corner

*celebrating craft, beauty, passion and skill*

## *The Senses Issue*

*Free feelings inside every copy!*

*See it, touch it, smell it, hear it, taste it...*



## WINEMAKERS

### KATY WILSON *LaRue Wines*

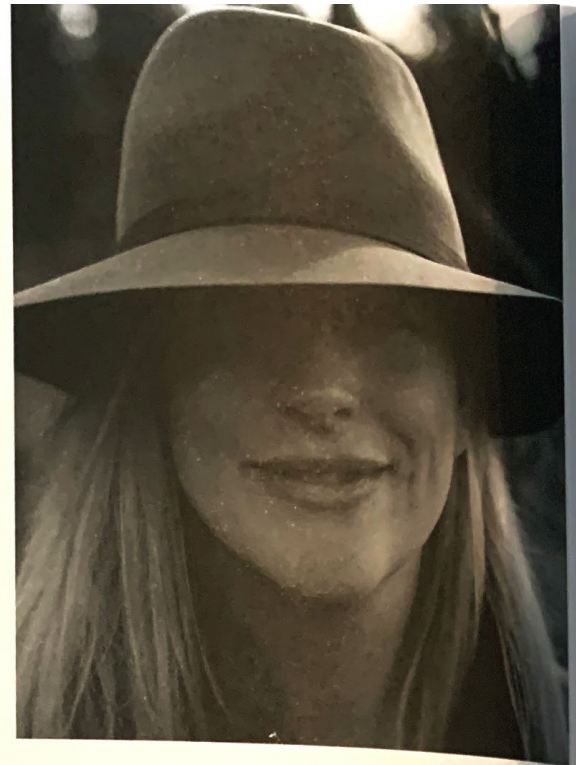
Katy Wilson grew up on a walnut orchard in the Central Valley of California: 'I was driving tractors, pruning trees, and learning how to weld by the time I was 12.' Her decision to study Agriculture Business at Cal Poly in San Luis Obispo seemed like a natural choice, as did her transition into wine: 'I liked that the cycle of trees in the orchard were similar to that of the vines – I could see which trees needed more water or care, or where the soil was different'.

Before starting her own winery – LaRue – in 2009, Wilson worked for producers such as Joseph Phelps in Napa, Flowers on the Sonoma Coast and Craggy Range in New Zealand. It was her time at Flowers that fed her fascination for the Sonoma Coastline, in particular the stretch between Sebastopol and Occidental, where her vineyards lie and the grape varieties Chardonnay and Pinot Noir thrive. 'I'd go on runs, or mushroom-picking, and get to see how different

the ocean and the climate was each day'. She describes her role at the vineyard as akin to that of a caretaker – caring for the grapes and making sure they have what they need to thrive, but allowing nature to take its course too. 'Agriculture is part of who I am,' she says. But for Wilson, it is in the winery where the craft begins. 'In the winery I am hands-on. I am dealing with something that is alive, and there are hundreds of different decisions that will affect how the wine turns out'. These decisions include how a winemaker might ferment their wine (open or closed top fermenters), what type of vessel they might use to do this (new or old oak barrels, concrete tanks) or how long a wine might spend in bottle before it's ready to be sold and consumed.

Each of Wilson's wines is made differently, though they are all made from the same grape – Pinot Noir. Her aim is to let each wine speak for itself, making sure it carries the hallmarks of her style and approach as a winemaker, but allowing the character and nature of each vintage to show itself.

*laruewines.com*



Katy Wilson describes her hands-on role at LaRue Wines as being similar to that of a caretaker – after all, she reasons, 'in the winery I am dealing with something that is alive'





'I LIKE THAT THE  
CYCLE OF TREES IN  
THE ORCHARD IS  
SIMILAR TO THAT  
OF THE VINES'

---

